



Powered by  
**sedona**  
FRAMEWORK™

# OxPAGE DESIGN GUIDE



# Contents



Powered by  
**sedona**  
FRAMEWORK™

## Page

3	OxBase component
6	OxEditor view
10	Ox Widgets and properties
21	Data binding, fonts, images, file transfers
29	Password protected pages

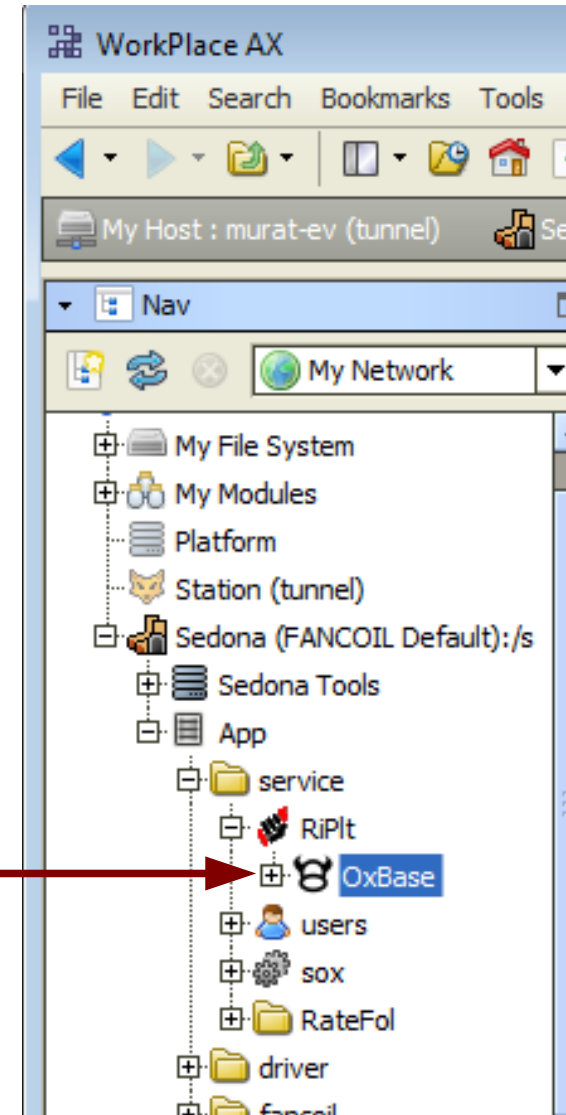


## OxBase component

OxBase is central to R-ION graphics functionality

OxBase must be present under platform service (and nowhere else)

OxBase Component





### LCD Brightness

Brightness level, in percent, during normal use

### LCD Sleep Brightness

Brightness level after a period has elapsed with no user interaction.

### LCD Sleep Timeout

The period, in seconds, that the display will wait for a user interaction before activating the sleep brightness level.

Note:

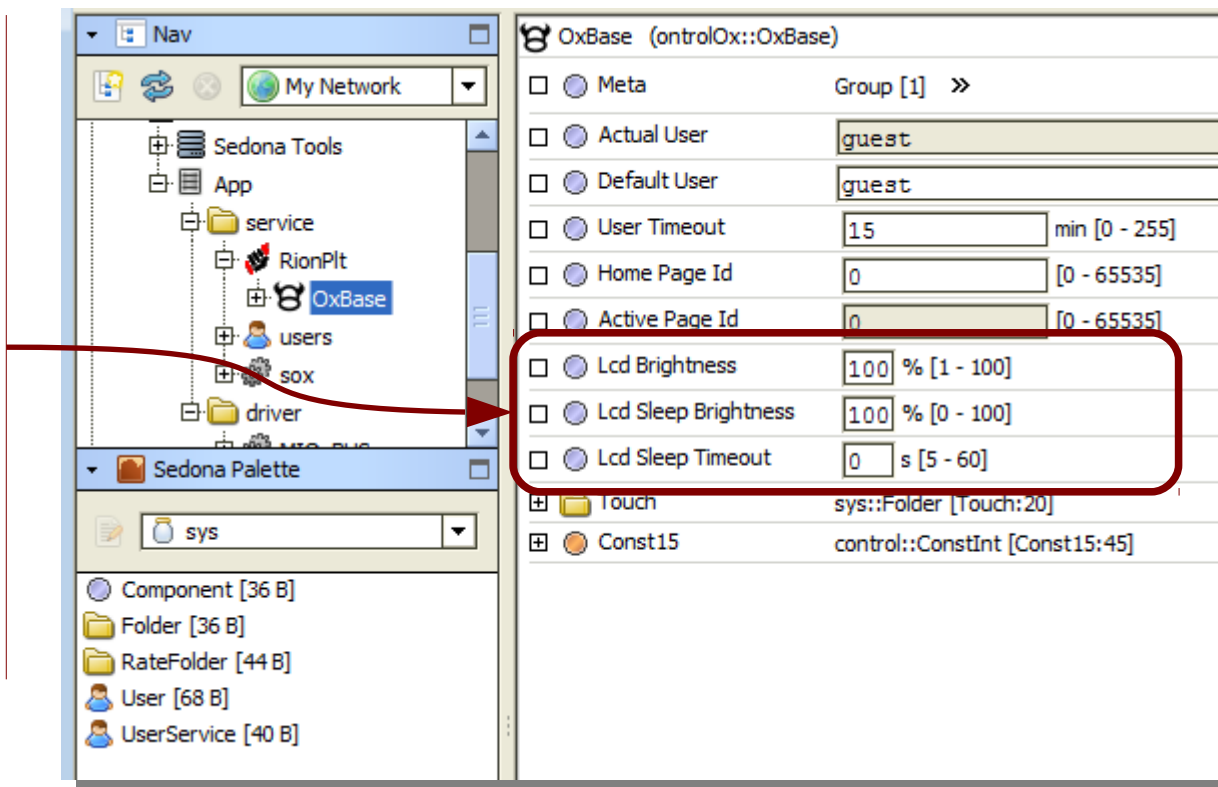
These settings may affect temperature measurement adversely.

Do not set a long timeout period, or a high sleep brightness level.

Recommended values:

Sleep brightness : 0%

Sleep timeout : 20 seconds



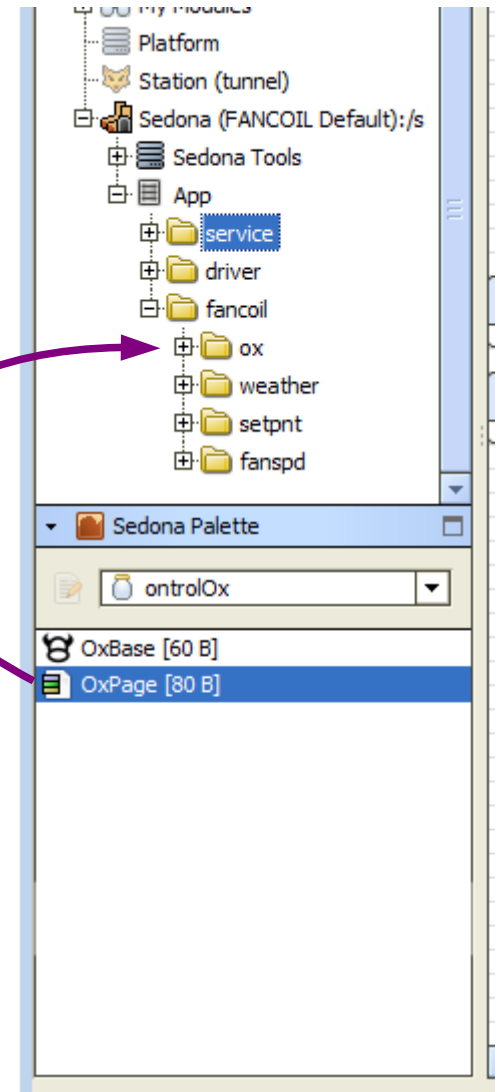
For security related settings (DefaultUser, UserTimeout), see page 29:  
*Password Protected Pages*



# Adding a new page

- In the Sedona Palette side bar, select ontrolOx palette from the dropdown box.
- Drag & Drop an OxPage component from the palette to any location in your App
- Double-click on the new OxPage to open the oxEditor view

drag&drop





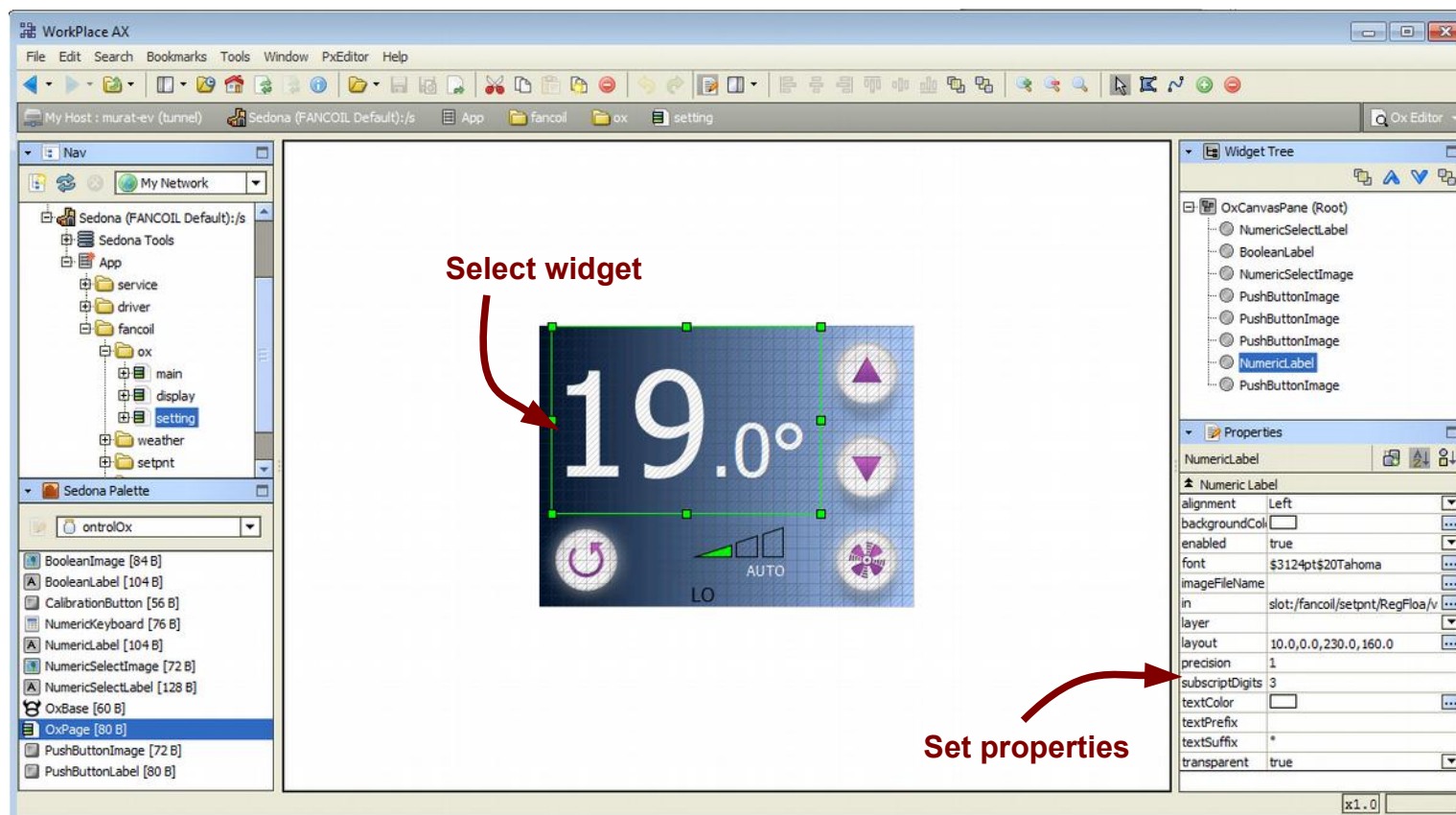


## OxEditor view

Double-clicking on an OxPage component in the app tree opens the oxEditor view.

OxEditor view is used to edit RION graphics (oxPages).

Workflow is very similar to Niagara px graphics design, with some limitations.





If an image file is selected, it will be displayed as the page background.  
Otherwise, the background is painted a fixed color as specified by the backgroundColor property.

OxPage  
background

Properties	
OxCanvasPane	
▲ Ox Canvas Pane	
backgroundColor	
enabled	true
image	Bckgrnd-0.png
imageId	
layer	
layout	fill
maxImageId	1
touch	
touchTimeout	30
viewSize	320.0,240.0
visible	true

### Dynamically changing the background image :

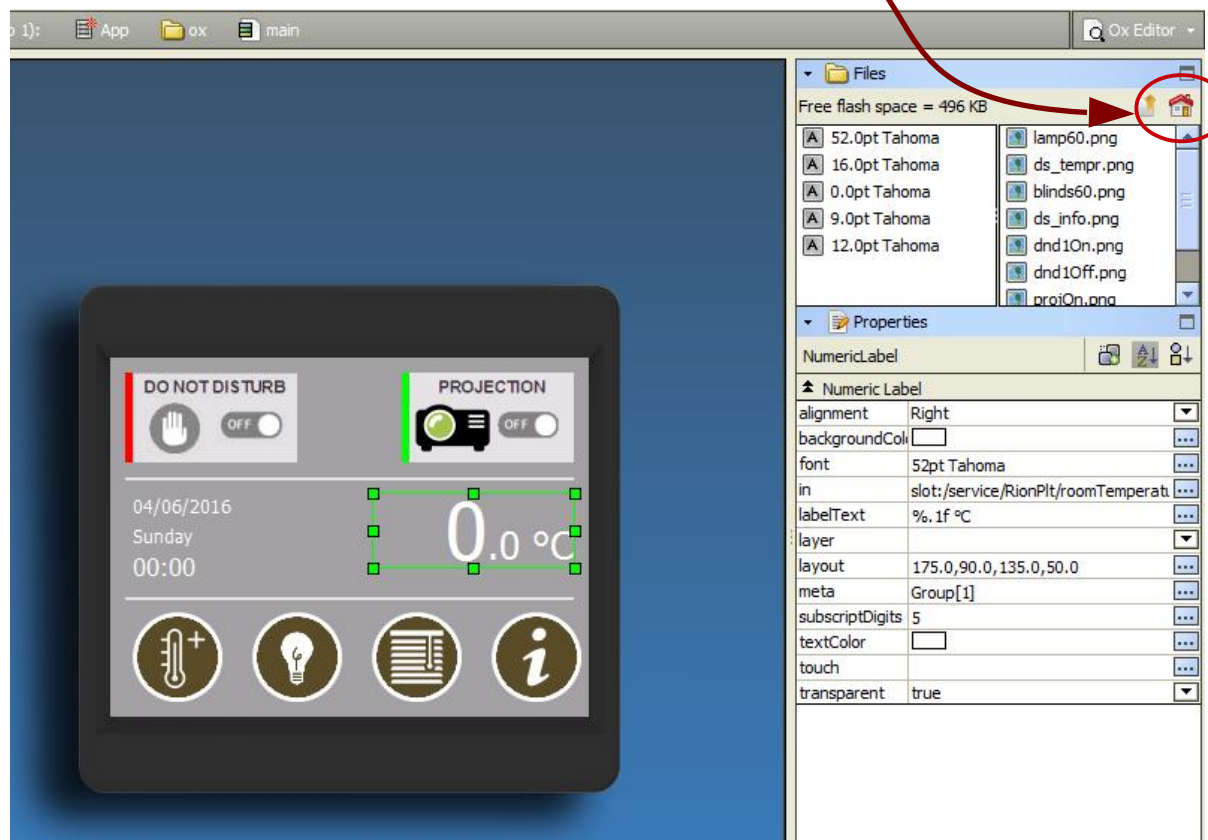
The background image can be dynamically changed depending on an integer value.

- The selected image file must be the first in a sequence and its name must end with a '0'
- An integer value from a component must be associated with the imageId property.
- An input value of 0 will cause the first image to be used (file name ending with '0')
- An input value of 1 will display the next image (file name ending with '1')...
- You must also set the maxImageId property



## Setting the home page

Click the HOME button on top-right corner of the Files pane of oxEditor view.



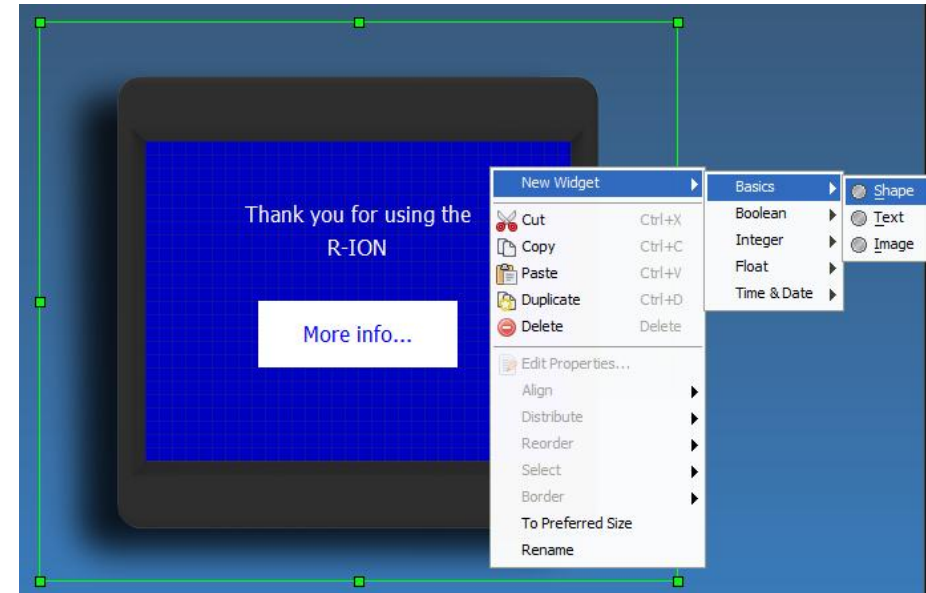




## ADDING WIDGETS

- right-click on an empty area of the design window,
- click New Widget,
- select from the list of available widgets.

The available widgets are categorized according to the type of live values they can be associated with<sup>1</sup>.



<sup>1</sup> If widgets are not categorized as seen on image, you are using a different version of module "OntrolSedonaUtil". Check from [www.ontrol.com](http://www.ontrol.com) for the latest version.



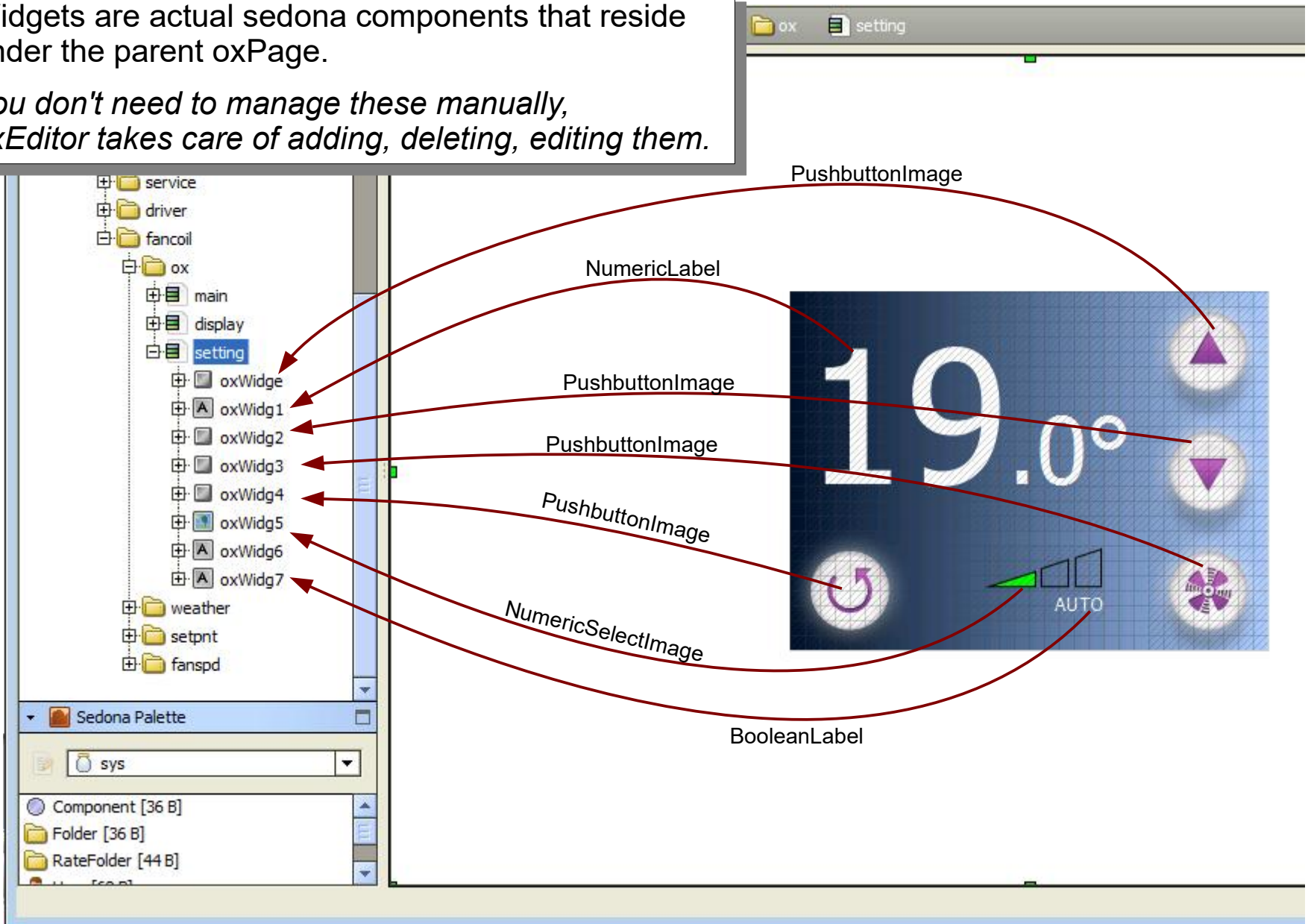
# OxWidgets (under the hood)



Ox Widgets (under the hood)

Widgets are actual sedona components that reside under the parent oxPage.

*You don't need to manage these manually, oxEditor takes care of adding, deleting, editing them.*



Ox Widgets



## OxWidgets Common Properties

Many common properties are shared across multiple widget types. These are shortly explained here.

<b>Shape</b>	Determines shape of widget (rectangle or ellipse)
<b>Background Color</b>	Used to select a color to paint the background of a widget. Only active when <i>transparent</i> property is set to False.
<b>Transparent</b>	Determines whether a solid background color will be painted for a widget.
<b>Meta</b>	Used to define security levels for password-protected page.
<b>Visibility</b>	Can be linked from a boolean out slot to dynamically hide/show the widget
<b>Blink</b>	Can be linked from a boolean out slot to make the widget blink
<b>Touch</b>	Can be linked to boolean in slot to trigger actions. Most commonly used with components from the ontrolTrigger kit. Usage is explained in detail in a separate document: <i>OxPage Touch Functions</i>



## Common Properties related to display of text

Widgets that display text share the below properties.

<b>Text</b>	Text to display within the widget. On widgets that display a dynamic (live) value, this property allows the user to set: <ul style="list-style-type: none"><li>- a fixed prefix to be displayed before the live value</li><li>- a fixed suffix to be displayed after the live value</li></ul>
<b>Text Color</b>	Choose the color of text.
<b>Font</b>	Select from list of available fonts. Only fonts & sizes in the <i>sedona/ontrol/fontBank</i> folder are listed.
<b>Alignment</b>	Alignment of text within the bounds of the widget (left, right or center)
<b>Subscript Digits</b>	The number of characters from the right to display at half size.



Example:  
Using the *SubscriptDigits* property  
on a temperature display



### NEW WIDGET MENU

<b>Basics</b>	> <b>Shape</b> <b>Text</b> <b>Image</b>	<b>Shape</b> <b>Text</b> <b>Image</b>	Draw a simple filled rectangle or ellipse Display a simple fixed label Display a fixed image
<b>Boolean</b>	> <b>Label</b> <b>Image</b>		
<b>Integer</b>	> <b>Value Display &amp; Set</b> <b>Text Select</b> <b>Image Select</b>		
<b>Float</b>	> <b>Value Display</b> <b>Value Display &amp; Set</b>		
<b>Time &amp; Date</b>	> <b>Time</b> <b>Date</b> <b>Schedule</b>		

TIP  
Shape can be used to create a transparent touch area when button images are part of the background image.





## NEW WIDGET MENU

**Basics** > Shape  
Text  
Image

**Boolean** > Label  
Image

**Integer** > Value Display & Set  
Text Select  
Image Select

**Float** > Value Display  
Value Display & Set

**Time & Date** > Time  
Date  
Schedule

**Boolean Label** : Display one of two texts depending on the value of a linked boolean slot.

**Boolean Image** : Display one of two images depending on the value of a linked boolean slot.

### TIPS

Boolean Label allows also changing background color and text color according to the boolean value.



### NEW WIDGET MENU

- Basics > Shape  
Text  
Image
- Boolean > Label  
Image
- Integer > Value Display & Set  
Text Select  
Image Select
- Float > Value Display  
Value Display & Set
- Time & Date > Time  
Date  
Schedule

**Text Select** : Displays one of a range of fixed texts, depending on the value of a linked integer slot.

Some examples:  
 - Slow / Medium / Fast  
 - Hand / Off / Auto

Selection is zero based.  
 A value of 0 will cause the first text to be displayed.  
 A value of 1 will display the next text...

**Image Select** : Displays one of a range of fixed images, depending on the value of a linked integer slot.

Note for the *image* property  
 The selected image must be the first in a sequence and its name must end with a '0' (e.g. *fan0.png*)

Selection is zero based:  
 - An input value of 0 will cause the first image to be displayed (file name ending with '0')  
 - An input value of 1 will display the next image (file name ending with '1')...

You must also set the maxIndex property

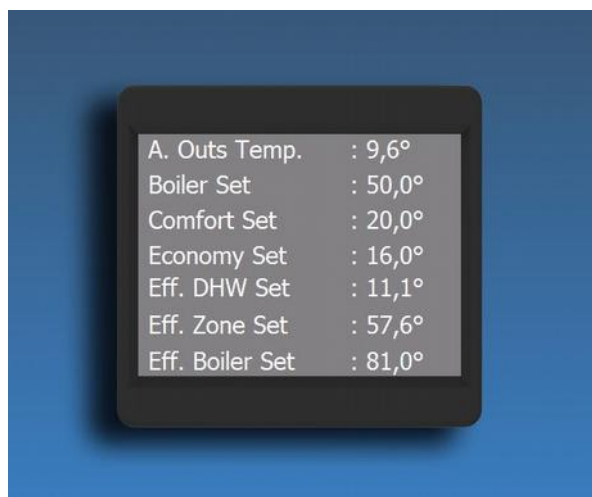


Example: Use of ImageSelect widget for displaying fan speed



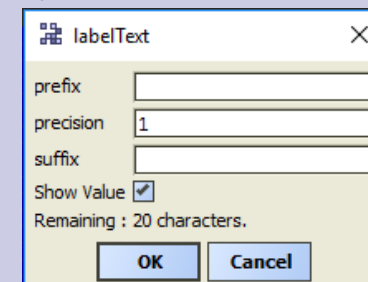
## NEW WIDGET MENU

- Basics > Shape  
Text  
Image
- Boolean > Label  
Image
- Integer > Value Display & Set  
Text Select  
Image Select
- Float > Value Display  
Value Display & Set**
- Time & Date > Time  
Date  
Schedule



### Value Display : Display a numeric value

Precision: you can set the number of digits to display after the decimal point. This is not a separate property, but a feature when setting the labelText:



You can also define

- a fixed prefix
- a fixed suffix

Value Tab Position : This property is extremely useful if you are configuring table-like displays.

If set to a non-zero value,

- The prefix will be displayed first (left-aligned)
- a semicolon (':') character will be painted at the position you specify
- the linked live value will be displayed after the semicolon

This enables multiline label-value paired displays with both values and labels aligned.



## NEW WIDGET MENU

**Basics** > Shape  
Text  
Image

**Boolean** > Label  
Image

**Integer** > Value Display & Set  
Text Select  
Image Select

**Float** > Value Display  
Value Display & Set

**Time & Date** > Time  
Date  
Schedule

**Value Display & Set** : Display a numeric value with the ability to change it using a numeric keypad.

This widget is similar to the Float>ValueDisplay widget (see previous page). It displays a numeric value, but also presents a numeric keypad when the widget is touched to enable changing the value



Unlike other widgets, this can be used with both float and integer types. Two input slots are provided to enable that:

- 'in' slot is for float values
  - 'inInt' slot is for integer values
- Make sure you use one of these, not both.

minmax

Limits user adjustments to a predefined range.



## NEW WIDGET MENU

- Basics > Shape  
Text  
Image
- Boolean > Label  
Image
- Integer > Value Display & Set  
Text Select  
Image Select
- Float > Value Display  
Value Display & Set
- Time & Date > Time  
Date  
Schedule

**Time** : Displays a time value in the format hh:mm. The input is interpreted as minutes-afer-midnight.

**Date** : Displays system date in the formast dd/mm/yyyy as obtained from the dateTimeService active in the app.

### AllowEdit

Both widgets have an *allowEdit* property. If set to true, the widgets will pop-up an editing window to set the associated time/date.







### NEW WIDGET MENU

- Basics** > Shape  
Text  
Image
- Boolean** > Label  
Image
- Integer** > Value Display & Set  
Text Select  
Image Select
- Float** > Value Display  
Value Display & Set
- Time & Date** > Time  
Date  
**Schedule**

### Schedule

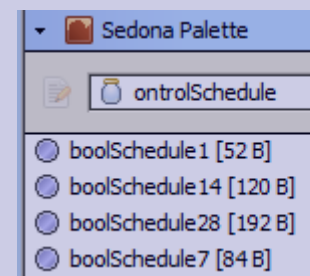
This widget provides a multiple-page fixed UI to display and edit weekly time schedules

The widget's 'in' property must be associated with the 'out' property of a schedule component from the ontrolScheduleKit.

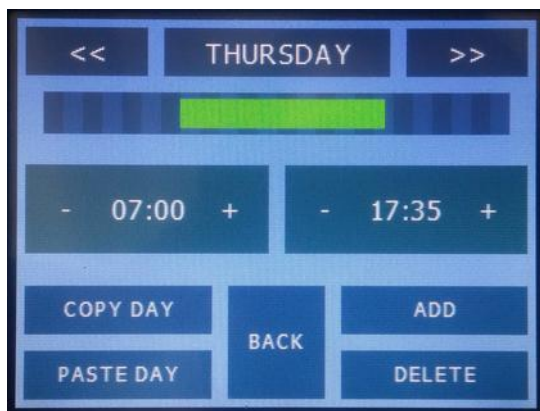
It normally displays the current status (on/off) of the associated time schedule.

#### TrueImageFileName / FalseImageFileName

If these properties are set, the display will use these two images to show time schedule status. Text related properties will be ignored.



When touched, a custom UI will be displayed to edit the time schedule. Existing periods may be modified or deleted, new periods can be added.





# NumericKeypad Widget



This widget is typically used with a RegFloat component (in ontrControl kit) to display and modify non-volatile register values.

## OPERATION

- This widget will display the value of the RegFloat.
- When touched, a full screen numeric keypad will cover the oxPage and a new value can be entered by the user.
- If the user enters a new value and touches ENT, the new value is saved and the display reverts back to the original oxPage.
- If the user touches ESC, the old value is not changed.

## BINDINGS

The bindings between this widget and a RegFloat component should be made as follows:

- in property of the widget <<< value slot of the RegFloat
- out property of the widget >>> the in slot of the RegFloat



Default numeric value editing view



OxPage design and editing workflow is very similar to standard Niagara px pages. There are, however, some crucial differences that you need to understand.

- Data binding
- Font handling
- Image handling
- Layering
- File transfers
- Buttons

These are explained in the following pages, except buttons, which are subject to a separate document.



## Binding widgets to live data values

The 'in' slot of an oxWidget enables it to receive live data values from another sedona component.

The oxEditor provides a user-friendly way to link this 'in' slot to another sedona component.

Just click on the 'in' property of a widget, and you can select the source slot freely from the component tree of your App.

The linking will be automatically done for you.

The screenshot shows the oxEditor interface with several windows:

- Nav:** A tree view of the application structure, including 'My Modules', 'Platform', 'Station (tunnel)', 'Sedona (FANCOIL Default):/s', 'Sedona Tools', 'App', 'service', 'driver', 'fancoil', 'ox', 'main', 'display', 'setting', 'weather', 'setpnt', and 'fanspd'.
- Widget Tree:** A tree view of the current widget hierarchy, showing 'OxCanvasPane (Root)' with children like 'BooleanLabel', 'NumericSelectImage', and several 'PushButtonImage' widgets.
- Properties:** A table of properties for the selected 'NumericSelectImage' widget. The 'in' property is highlighted, and its value is 'slot:/fancoil/fanspd/forOx/out'.

Numeric Select Image	
enabled	true
image	fan-0.png
in	slot:/fancoil/fanspd/for...
layer	
layout	130.0,170.0,80.0,30.0
maxIndex	3
visible	true
- Select Ord:** A dialog box showing a tree view of the component tree. The 'In' slot is selected under the 'forOx' component. The 'Type' section shows 'Slot' selected.
- Widget:** A 'NumericSelectImage' widget is shown on a grid, displaying '0.0°' and 'AUTO'.

Three numbered red arrows indicate the steps:

- 1 Click 'in' property:** Points to the 'in' property in the Properties window.
- 2 Click 'open' button:** Points to the 'Open' button in the 'in' property field.
- 3 Select slot from component tree:** Points to the 'In' slot in the 'Select Ord' dialog.



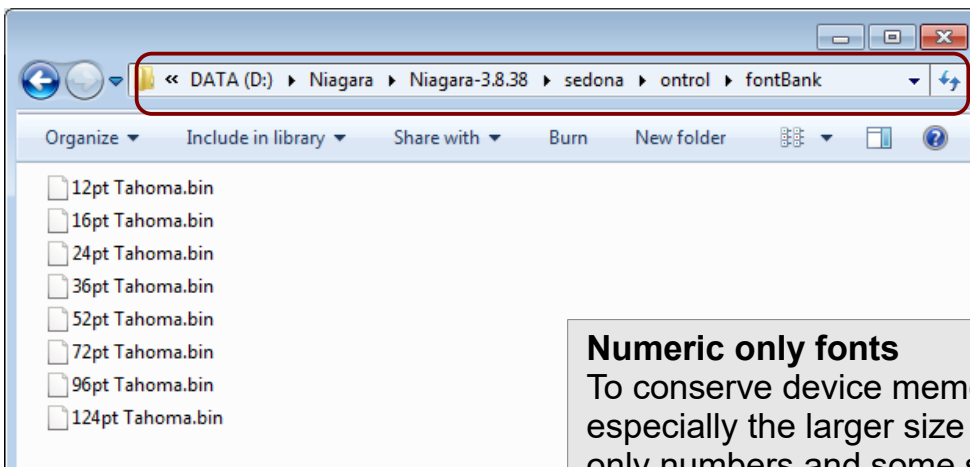
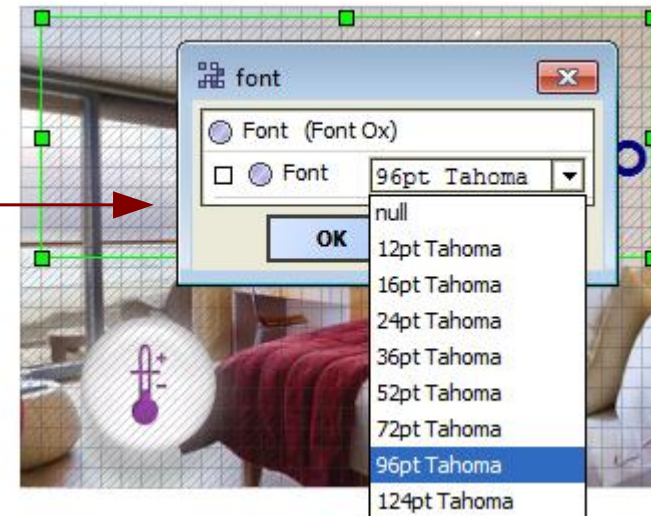


RION uses special native font files, which are typically transferred to the device during page design.

When you click on a oxWidget's **font** property, you will be presented with a list of fonts available on your system.

### fontBank folder

Available RION font files are stored in a special folder:  
{Niagara Installation}/sedona/ontrol/fontBank



### Numeric only fonts

To conserve device memory, some font files, especially the larger size fonts, may contain only numbers and some symbols, but no letters. When you attempt use these fonts to display text, letters will not display properly.





- You can use GIF, JPG or PNG images
- Your image must be in the imageBank folder {Niagara Installation}/sedona/ontrol/imageBank
- The name must be at most 12 characters long

**2** Click 'open' button

**1** Click 'image' property

**3** Select file from imageBank folder

File Chooser: Current Path: D: / Niagara / Niagara-3.8.38 / sedona / ontrol / imageBank

Files of type: image files with names upto 12 characters

Properties: OxCanvasPane image hotelroom.png



## Color Depth

When you save an OxPage, the images are converted to a native format before being transferred to the device. This may cause a reduction in color depth.

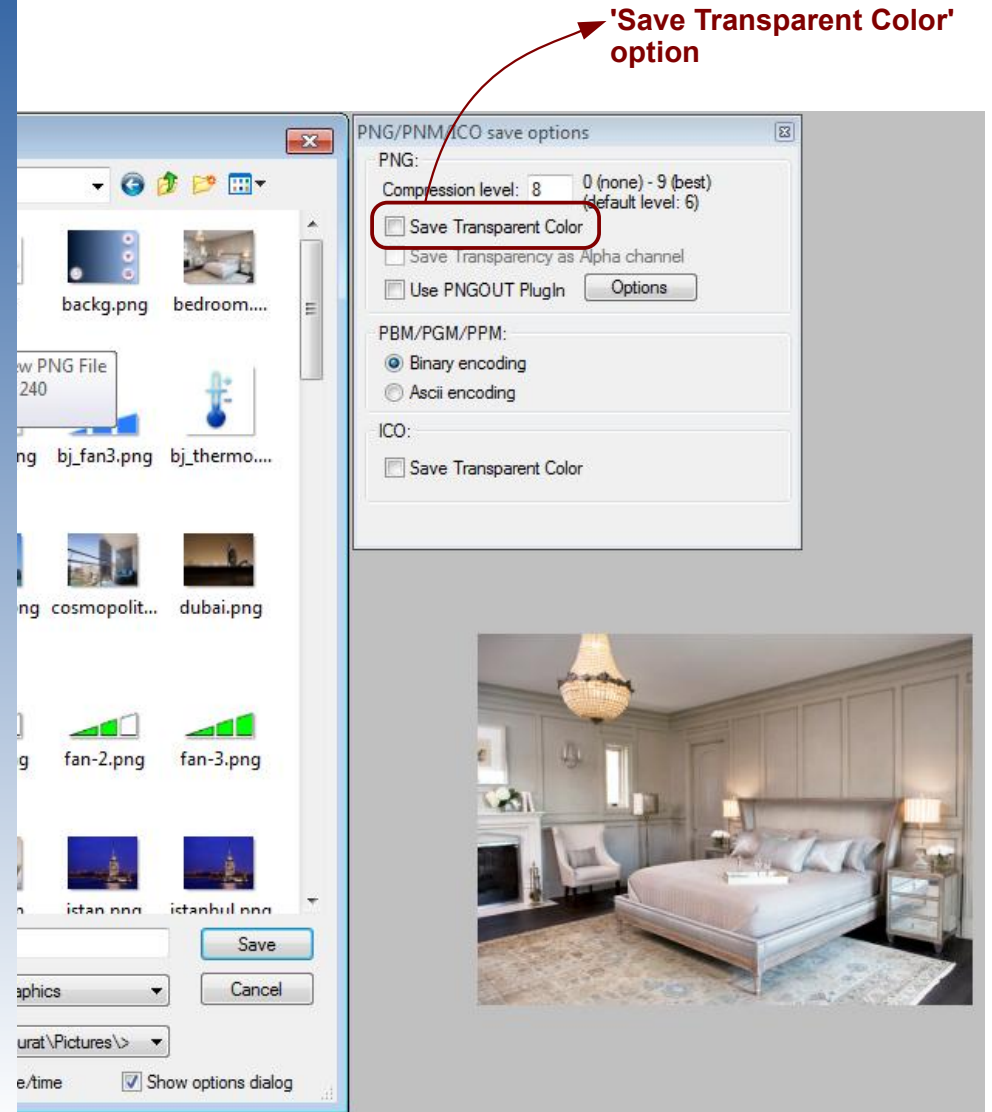
(The native format supports 65535 colors)

## Transparency

When images containing transparency information is converted to native format for saving to device, they will result in considerably larger files.

Many image editing programs will let you choose whether you want to include transparency when saving an image. If you know you don't need transparency, make sure you save your image without transparency info.

Example on right from “IrfanView” software





Avoid overlapping widgets !

## There is no layering !

You should never place overlapping widgets on an oxPage. There is no logical way to guarantee in which order the widgets are painted. Even if your page view looks right, it might well change after the next save or after an update. So,

**\*\*\* AVOID OVERLAPPING WIDGETS \*\*\***

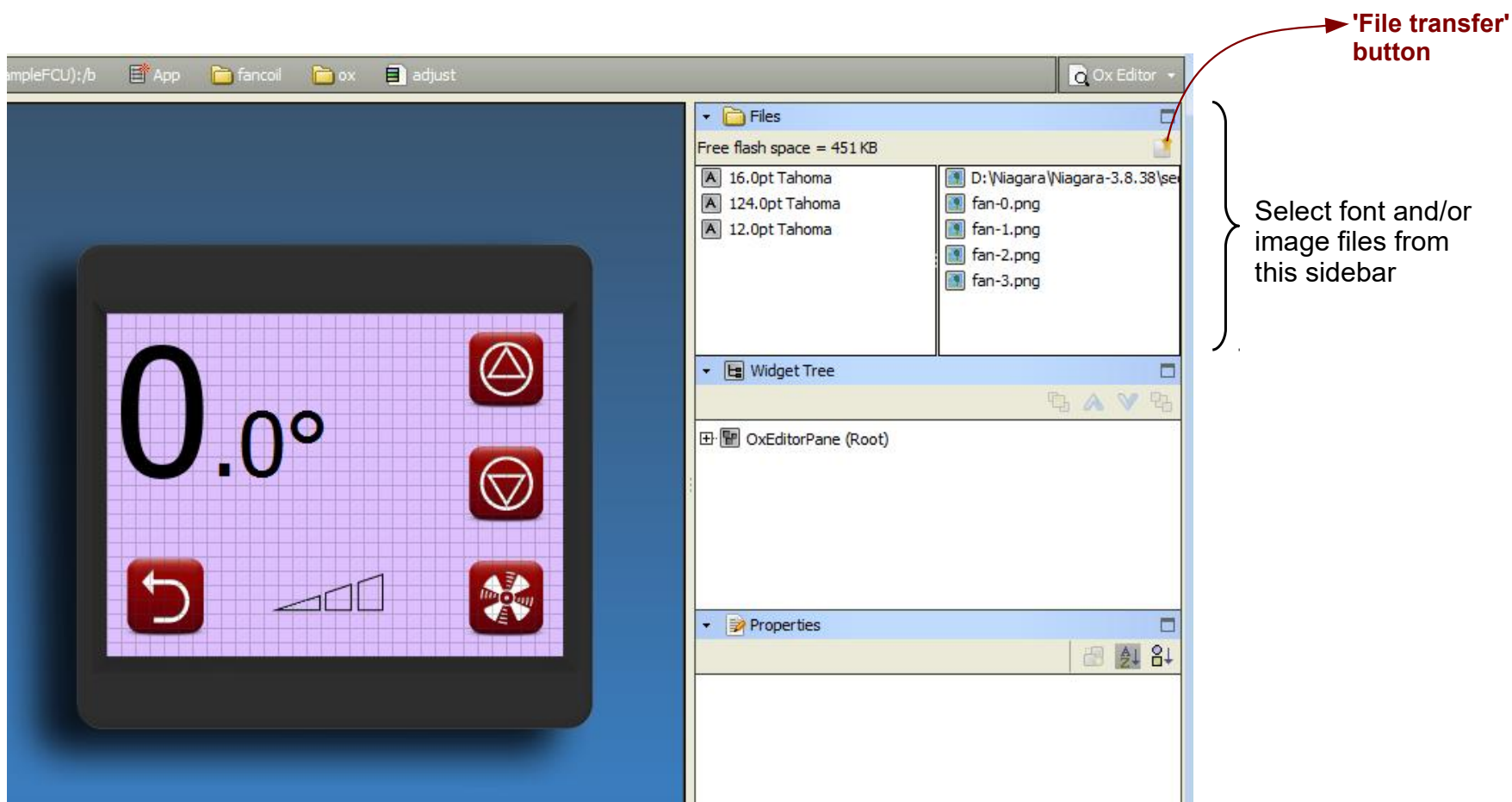


Transfer font and image files to the device

## File Transfers

Your oxPages will be using a number of font and image files. These need to be transferred to the device to be displayed on the touch-screen.

Use the Files sidebar to select and transfer files to the device.



File transfers

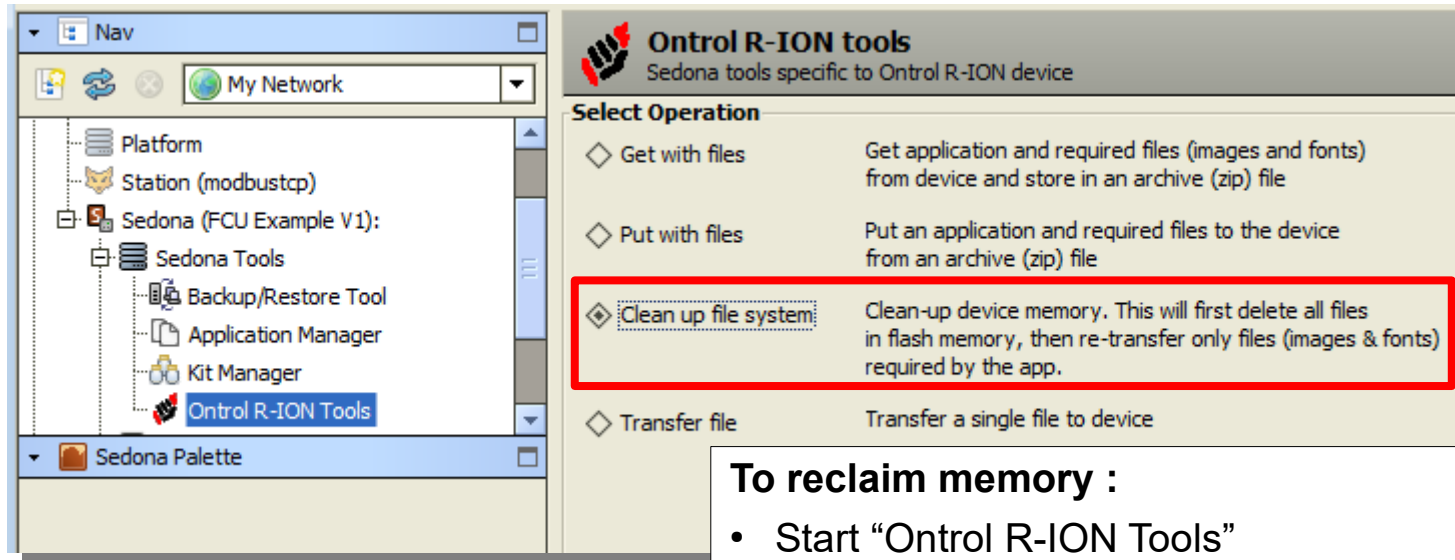




## IMPORTANT MEMORY WARNING

As you work on your oxPage designs, you will have transferred many images and fonts to the device, some of which are probably not being used. (You tried something, changed your mind, tried another image...)

Since the oxEditor doesn't delete any existing files from the device, you might run into a memory issue at some point.



### To reclaim memory :

- Start “Ontrol R-ION Tools”
- Select “Clean up file system” option
- Click “Finish” on the next screen

This will first clear all files from device memory, then transfer only the required ones, thus reclaiming space.





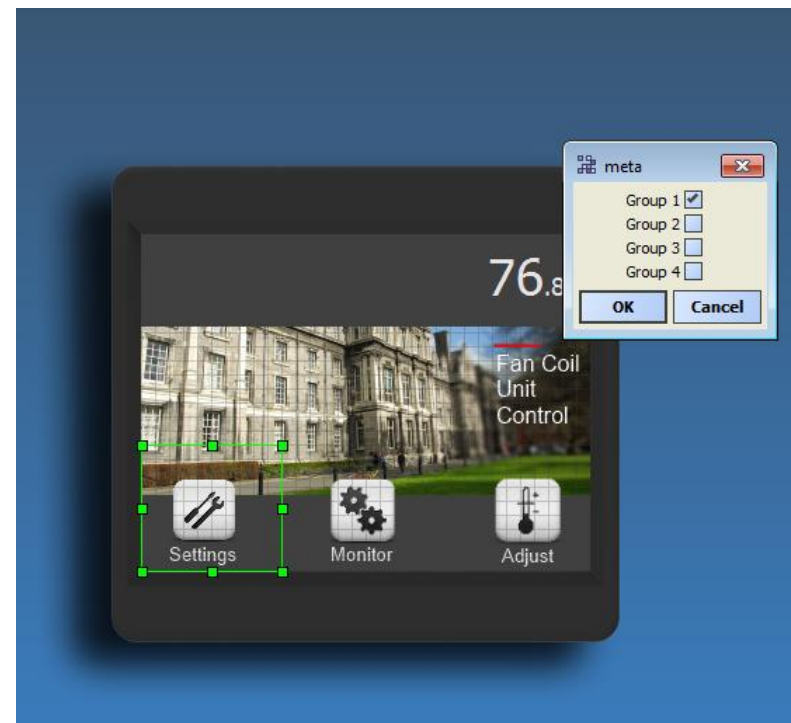
Ox pages and widgets can be categorized and password protected.

The security scheme makes use of the standard Sedona UserService permissions.

To setup password-protected pages:

- 1) Double-click on the 'users' service and:
  - add additional user(s) with unique<sup>1</sup> numeric<sup>2</sup> passwords.
  - set read/write group privileges for these new users<sup>3</sup>
- 2) In OxEditor, set the 'meta' property of widgets (typically buttons) to limit access to certain groups.

When a user clicks (touches) a security-limited button, he/she will be presented with a numeric keypad to enter the password. The hyperlink will work only if the entered password matches a user with access permissions for the set category.



<sup>1</sup> The password for each user needs to be unique. Do not use the same password for more than one user.

<sup>2</sup> The passwords need to be numeric. Do not use letters. Only digits are allowed.

<sup>3</sup> All widgets, components and pages are member of Group1 by default, unless specifically modified.