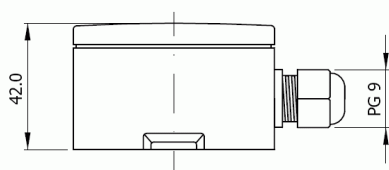
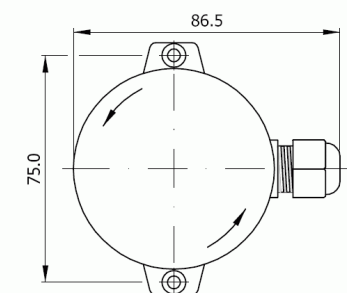


- Direct output temperature sensor for outside
- PT 1000 type sensor
- Wide measurement range
- Easy installation
- High accuracy
- Compatible with Ontrol T3001, E100, ION, L-ION, T-ION and P-ION controllers
- Compatible with any controllers using PT 1000 sensor



Dimensions (mm)



Specifications

Ambient conditions

Ambient	-40...+70 ° C , 5 % ...95% RH humidity
Fluid	Air, -40...+70 ° C

Nominal value 0 ° C, 1000 Ohm

Resistance rise ~3.85 Ohm / K

Accuracy DIN IEC751, Class B

Protection IP65

Electrical connections Terminal connections, max 1.5 mm²

Resistance table for PT1000 type sensors

° C	Ohm	° C	Ohm	° C	Ohm	° C	Ohm	° C	Ohm	° C	Ohm
-27	894.0	0	1000.0	27	1105.1	54	1209.3	81	1312.7	108	1415.3
-25	901.9	2	1007.8	29	1112.8	56	1217.0	83	1320.4	110	1422.9
-23	909.8	4	1015.6	31	1120.6	58	1224.7	85	1328.0	111	1426.6
-21	917.7	6	1023.4	33	1128.3	60	1232.4	87	1335.6	113	1434.2
-19	925.5	8	1031.2	35	1136.1	62	1240.1	88	1339.4	115	1441.7
-17	933.4	10	1039.0	37	1143.8	64	1247.7	90	1347.0	117	1449.3
-15	941.2	12	1046.8	39	1151.5	65	1251.6	92	1354.6	119	1456.8
-13	949.1	14	1054.6	41	1159.3	67	1259.2	94	1362.2	121	1464.4
-11	956.9	16	1062.4	42	1163.1	69	1266.9	96	1369.8	123	1471.9
-9	964.8	18	1070.2	44	1170.8	71	1274.5	98	1377.4	125	1479.4
-7	972.6	19	1074.0	46	1178.5	73	1282.2	100	1385.0	127	1487.0
-5	980.4	21	1081.8	48	1186.2	75	1289.8	102	1392.6	129	1494.5
-4	984.4	23	1089.6	50	1194.0	77	1297.5	104	1400.2	131	1502.0
-2	992.2	25	1097.3	52	1201.6	79	1305.1	106	1407.7	133	1509.5

Expected error for every 10 meters of cable:

Cable Section	Error
0.5 mm ²	+0.18 ° C
1.0 mm ²	+0.09 ° C
1.5 mm ²	+0.06 ° C

Installation Notes

- Avoid mounting the sensor in direct sunlight
- Mount the sensor on the north side of building.
- Preferably mount the sensor at 1/3 of the height of building.
- It is recommended that the sensor be mounted with the cable entry at the bottom for ensuring water-tightness.